

# Spatial prediction of precipitation in Lima

## About the project:

Perform a spatial analysis using the precipitation data collected at SENAMHI meteorological stations (Figure 1). Notice that there is a strong relationship between elevation and precipitation (Figure 2), so you can use elevation as a predictor for the spatial model of precipitation.

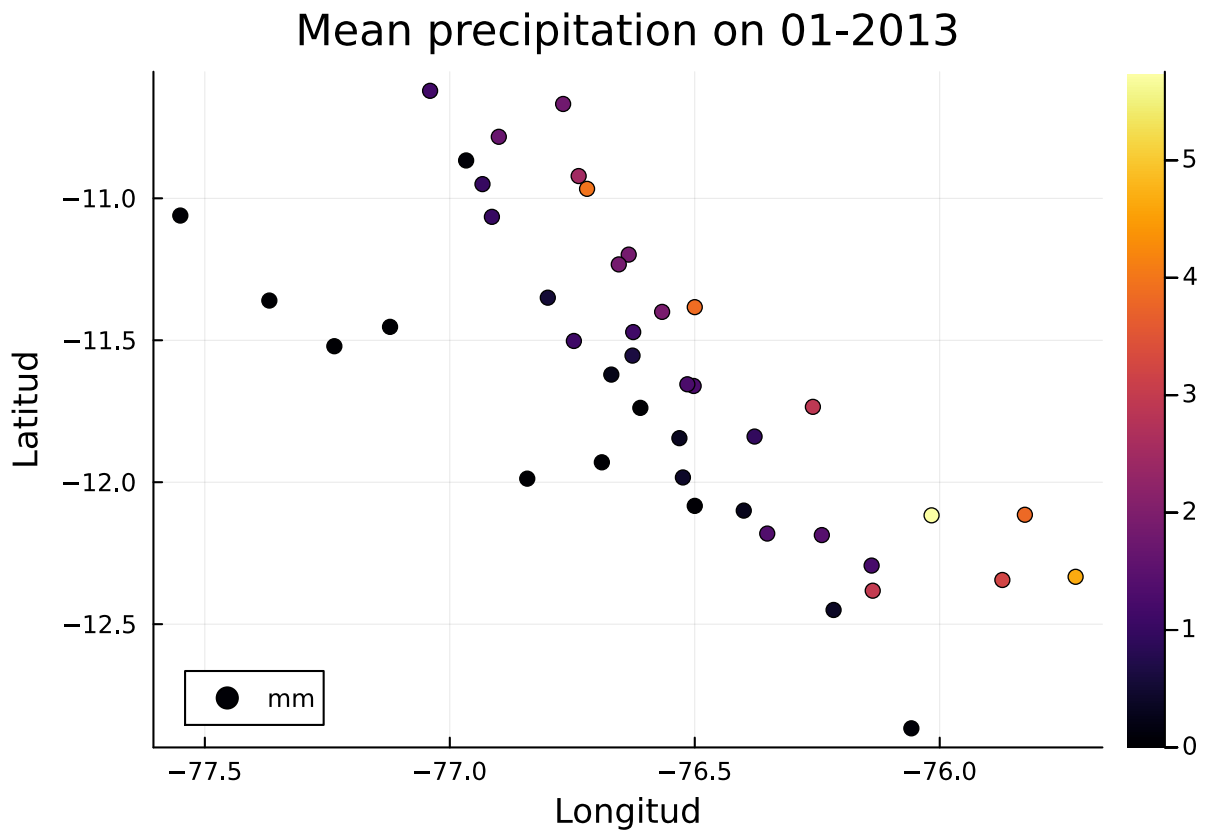


Figure 1: Precipitation levels at January 2023 in Lima.

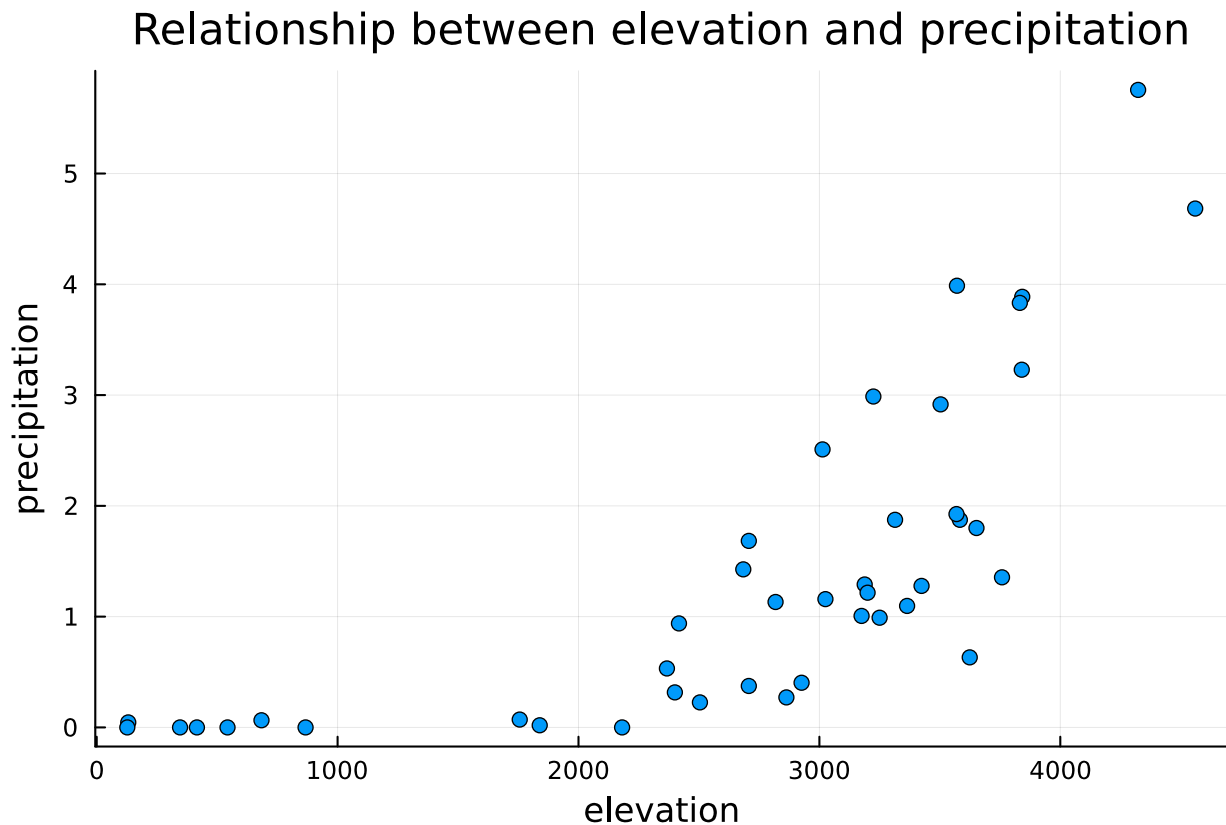


Figure 2: Precipitation and elevation relationship.

### Requirements:

- Use the data available in the labs repository of the course <https://gitlab.com/ErickChacon/course-spatial-statistics-julia>. The data can be found in the path: `data/processed/senamhi-precipitation-2013-jan.geojson`.
- Clearly state your research question and goal in the introduction.
- Include: 1) introduction, 2) methods, 3) results, and 4) conclusion and discussion.
- Cite at least 3 papers.

### Alternative:

Alternatively, you can present a project for another problem of interest following the requirements described above.

### Deadline:

06/07/2023